

The FFT Governor Dashboard has been produced by FFT, working in partnership with the National Governors' Association and the Wellcome Trust. The dashboard helps school governors to hold schools to account, support and challenge the leadership team and make more informed strategic decisions.

The dashboard helps with answering these six key questions:

1. How does attainment and pupil progress at my school compare to the national average?
2. How are we performing in different subjects?
3. Do we have any under-performing groups of pupils?
4. How might the context of our school affect our performance?
5. How does pupil attendance compare to the national average?
6. What are the strengths and weaknesses of your school?

The Governor Dashboard is one part of the FFT Aspire dashboard series, a set of high quality, simple-to-use reports for school leaders, teachers and governors. The dashboards support rigorous self-evaluation, inspection preparation and in-depth planning using the latest available national data.

Guidance on using the dashboard

Attainment actual results for your school using a range of measures such as averages and thresholds.

Progress the value added progress that your pupils have made from one key stage to the next. FFT compares your actual results to the estimated results based on the progress of similar pupils nationally.

Gauges show your headline school performance for actual results and pupil progress, indicating whether performance is in line with the national average, or significantly above/below the national average.

Strengths and weaknesses these highlight key pupil groups and subjects where progress is above or below the national average.

Statistical significance green plus signs (+) and red minus signs (-) highlight where either actual results or pupils' progress is significantly above or below the national average.

Trends the dashboard analyses school performance over 3-5 years. Any significant year-on-year improvement is highlighted using an up arrow (↑). Significant declines in performance are highlighted with a down arrow (↓).

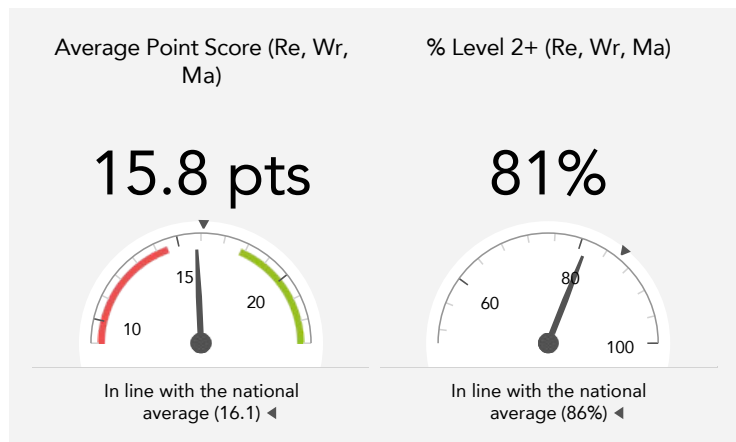
Small cohorts for small pupil cohorts we will suppress the data with an asterisk (*). Where it is not possible to calculate a figure or if data is not available, this will be shown by a dash (—).

Data sources the dashboard is generated using data from FFT Aspire which includes data sourced from the DFE (National Pupil Database) and data calculated by FFT. The headline performance indicators will be consistent with RAISEonline and the DFE School Performance tables.

Overview

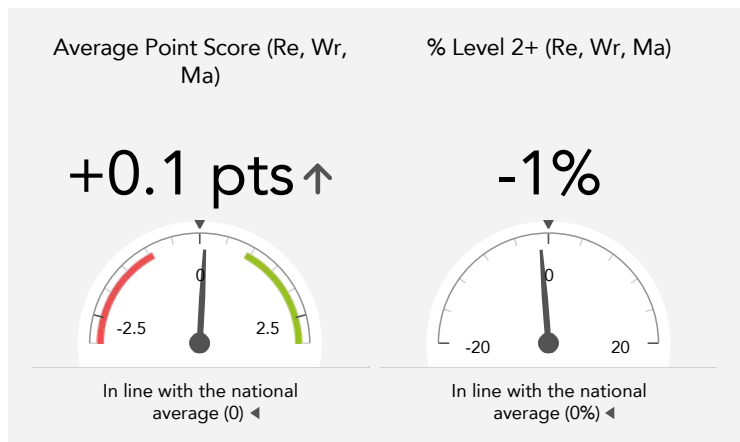
KS1 Attainment 2015 · Actual results

21 pupils



KS1 Progress 2015 · Value Added

20 matched pupils



KS1 higher and lower performing pupil groups 2015

	Higher performing	Lower performing
Overall achievement pupil progress	Middle attainers (5) Not FSM (in last 6 years) (17) ↑ Female (12) ↑	Higher attainers (5) Male (8) Lower attainers (10)
KS1 reading achievement pupil progress	Middle attainers (5) Higher attainers (5) ↑ Not FSM (in last 6 years) (17) ↑	Lower attainers (10)
KS1 writing achievement pupil progress	Middle attainers (5) Female (12) Not FSM (in last 6 years) (17)	Higher attainers (5) Male (8) First language English (20)
KS1 mathematics achievement pupil progress	Middle attainers (5) Female (12) ↑	Higher attainers (5) Male (8) No SEN (19)

Using FFT Aspire dashboards



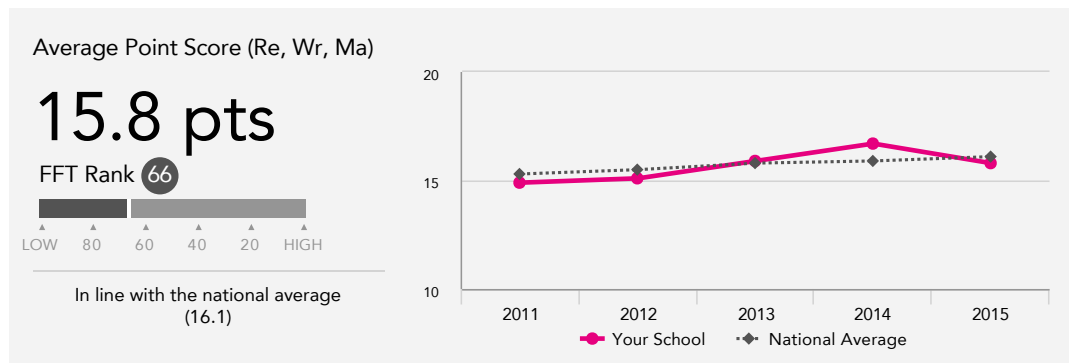
The dashboard provides an overview of performance in your school based on your actual results (**attainment**) and the value added pupil progress that pupils have made from one key stage to the next (**progress**).

The dashboard also provides a simple comparison of school performance against national averages. For value added progress measures, this comparison is based on the average progress made by similar pupils across the country. By 'similar pupils' we mean pupils with similar prior attainment, gender and month of birth.

Attainment & progress

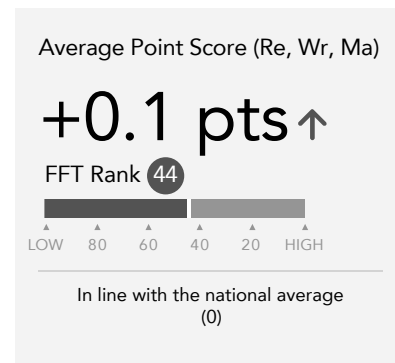
KS1 Attainment 2015

21 pupils

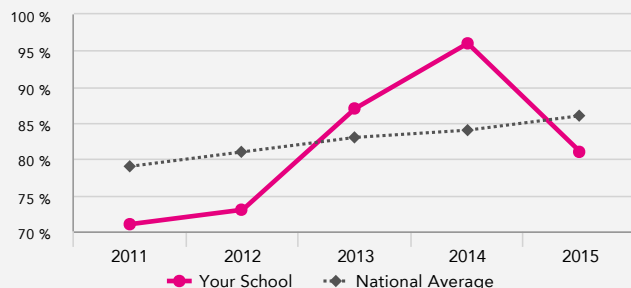
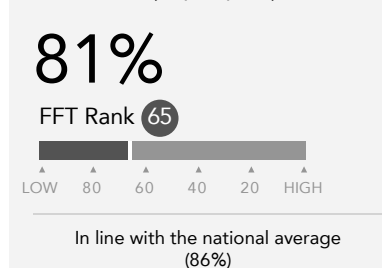


KS1 Progress 2015

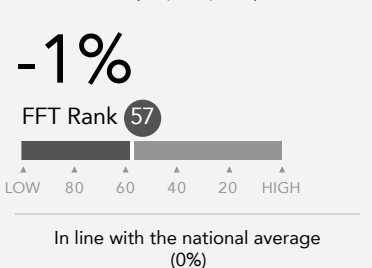
20 matched pupils



% Level 2+ (Re, Wr, Ma)



% Level 2+ (Re, Wr, Ma)



KS1 performance summary

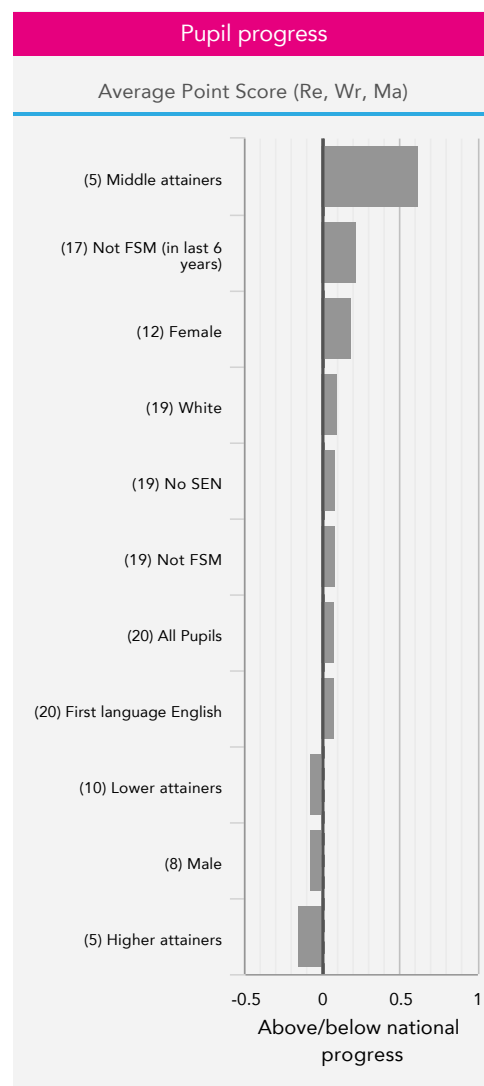
	Actual results			Pupil progress		
	2013	2014	2015	2013	2014	2015
Number of pupils / % matched	31	23	21	100%	100%	95%
Average level (Re, Wr, Ma)	2B	2A	2B	-0.2 ↓	-0.1	+0.0 ↑
Average Point Score (Re, Wr, Ma)	15.9	16.7	15.8	-1.2 ↓	-0.8	+0.1 ↑
% Level 2+ (Re, Wr, Ma)	87%	96%	81%	-7%	-1%	-1%
% Level 2B+ (Re, Wr, Ma)	65%	78%	67%	-16% ↓	-7%	+4%
% Level 3+ (Re, Wr, Ma)	6%	4%	5%	-13%	-17%	-4%
Average Point Score Reading	16.2	17.3	16.9	-1.4 ↓	-0.8	+0.5 ↑
% Level 2+ Reading	90%	96%	86%	-6%	-3%	-1%
% Level 3+ Reading	19%	26%	38%	-25% ↓	-23% ↓	+14%
Average Point Score Writing	14.6	16.0	14.9	-1.7 ↓	-0.7 ↑	-0.0
% Level 2+ Writing	87%	96%	86%	-7%	-1%	+3%
% Level 3+ Writing	6%	13%	5%	-19% ↓	-14%	-8%
Average Point Score Maths	16.9	16.8	15.7	-0.6 ↑	-0.8	-0.2
% Level 2+ Maths	97%	96%	95%	-1%	-3%	+7%
% Level 3+ Maths	26%	17%	5%	-11%	-22% ↓	-14%

Pupil groups

KS1 Pupil groups performance 2015

	Pupils	Actual results			Pupil progress			
		Average Point Score (Re, Wr, Ma)	% Level 2+ (Re, Wr, Ma)	% Level 3+ (Re, Wr, Ma)	Average Point Score (Re, Wr, Ma)	% Level 2+ (Re, Wr, Ma)	% Level 3+ (Re, Wr, Ma)	
Summary	All Pupils	21	15.8	81%	5%	+0.1 ↑	-1%	-4%
Gender	Male	9	14.9	67%	0%	-0.1	-2%	-8%
	Female	12	16.4	92%	8%	+0.2 ↑	-0%	-1%
Prior Attainment	Higher attainers	5	18.2	100%	20%	-0.1	+1%	-6%
	Middle attainers	5	17.3	100%	0%	+0.6	+4%	-7%
	Lower attainers	10	13.9	70%	0%	-0.1	-5%	-1%
Pupil Premium	FSM (in last 6 years)	*	*	*	*	*	*	*
	Not FSM (in last 6 years)	17	16.5	88%	6%	+0.2 ↑	-2%	-5%
SEN	School Action	*	*	*	*	*	*	*
	No SEN	19	16.1	89%	5%	+0.1	+0%	-4%
EAL	First language English	20	15.8	85%	5%	+0.1 ↑	-1%	-4%
FSM	FSM	*	*	*	*	*	*	*
	Not FSM	19	16.1	89%	5%	+0.1	+0%	-4%
Ethnicity	White	19	15.7	84%	5%	+0.1 ↑	-1%	-3%
	Other Asian	*	*	*	*	*	*	*
	No Ethnicity Data	*	-	*	*	-	*	*

KS1 Progress 2015



Subjects

KS1 subject performance 2015

	Actual results			Pupil progress			Actual results over time
	2013	2014	2015	2013	2014	2015	
Number of pupils / % matched	31	23	21	100%	100%	95%	
Reading							
% Level 2+	90%	96%	86%	-6%	-3%	-1%	
% Level 2B+	74%	91%	71%	-17%	-3%	-6%	
% Level 3+	19%	26%	38%	-25% -	-23% -	+14%	
Average level	2A	2A	2A	-0.2 -	-0.1	+0.1 ↑	
Average Point Score	16.2	17.3	16.9	-1.4 -	-0.8	+0.5 ↑	
Writing							
% Level 2+	87%	96%	86%	-7%	-1%	+3%	
% Level 2B+	68%	78%	67%	-14% -	-9%	+1%	
% Level 3+	6%	13%	5%	-19% -	-14%	-8%	
Average level	2B	2A	2B	-0.3 -	-0.1 ↑	-0.0	
Average Point Score	14.6	16.0	14.9	-1.7 -	-0.7 ↑	-0.0	
Maths							
% Level 2+	97%	96%	95%	-1%	-3%	+7%	
% Level 2B+	84%	91%	76%	-7%	-3%	+0%	
% Level 3+	26%	17%	5% -	-11%	-22% -	-14%	
Average level	2A	2A	2B	-0.1 ↑	-0.1	-0.0	
Average Point Score	16.9	16.8	15.7	-0.6 ↑	-0.8	-0.2	
Speaking and Listening							
% Level 2+	81%	100%	95%	-16%	+2%	+10%	
% Level 3+	55% +	0% -	10%	+18% +	-40% -	-8%	
Average level	2 +	2	2	+0.0	-0.3 -	+0.0 ↑	
Average Point Score	17.1 +	15.0	15.6	+0.1	-1.9 -	+0.2 ↑	
Science							
% Level 2+	81%	87%	95%	-17%	-11%	+8%	
% Level 3+	29%	26%	0%	-5%	-11%	-16%	
Average level	2	2	2	-0.2 -	-0.1	-0.1	
Average Point Score	15.5	16.0	14.5	-1.0 -	-0.8	-0.7	

Context

Context · Year 2 · 2014 / 2015

		Pupils	Proportion	
			School	National
Summary	All Pupils	20	100%	100%
Gender	Male	8	40%	51%
	Female	12	60%	49%
Prior Attainment	Higher attainers	5	25%	35%
	Middle attainers	5	25%	33%
	Lower attainers	10	50%	29%
Pupil Premium	FSM (in last 6 years)	*	*	*
	Not FSM (in last 6 years)	17	85%	75%
SEN	School Action	*	*	*
	No SEN	19	95%	84%
EAL	First language English	20	100%	80%
FSM	FSM	*	*	*
	Not FSM	19	95%	83%
Ethnicity	White	19	95%	75%
	Other Asian	*	*	*
	No Ethnicity Data	*	*	*

Absence · Year 2 · 2014 / 2015

		Pupils	Absence		Persistent absentees	
			School	National	School	National
Summary	All Pupils	20	7%	5%	10%	4%
Gender	Male	8	10%	5%	25%	4%
	Female	12	5%	5%	0%	4%
Prior Attainment	Higher attainers	5	9%	4%	20%	1%
	Middle attainers	5	4%	5%	0%	3%
	Lower attainers	10	8%	7%	10%	7%
Pupil Premium	FSM (in last 6 years)	*	*	*	*	*
	Not FSM (in last 6 years)	17	6%	4%	6%	2%
SEN	School Action	*	*	*	*	*
	No SEN	19	6%	5%	5%	3%
EAL	First language English	20	7%	5%	10%	3%
FSM	FSM	*	*	*	*	*
	Not FSM	19	6%	5%	5%	2%
Ethnicity	White	19	7%	5%	11%	3%
	Other Asian	*	*	*	*	*
	No Ethnicity Data	*	*	*	*	*